

BLISS
by
bürotime

technical document



BLISS

completing modern, young
and dynamic working areas



Özge Çağla Aktaş



Duygu Aslanel

“Seeking comfort for common areas, Bliss was designed with an awareness of aesthetic value in the armchair in every aspect; and it will be a complementary to innovative offices with its modern and dynamic details.”

product family

single



wooden leg



metal leg

coffee table



melamine



mdf



leather



glass

table features



melamine / 18mm



mdf* / 30mm



glass / 10mm



leather / 18mm

* mdf table finishes are painted with lacquered paint.

leg options



metal high leg



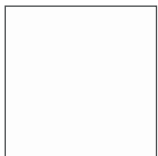
metal standard leg



wooden leg

leg color options

metal



white



grey



sand



antrachite



black



mat chrome

wooden leg



natural



american walnut

natural and American walnut varnish is applied on beech and beech wood. There may be color and pattern differences because it is natural material.

coffee table color options

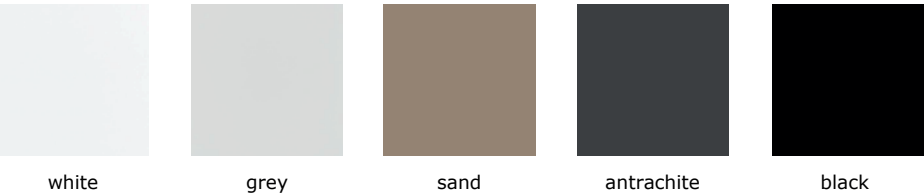
melamine



mdf



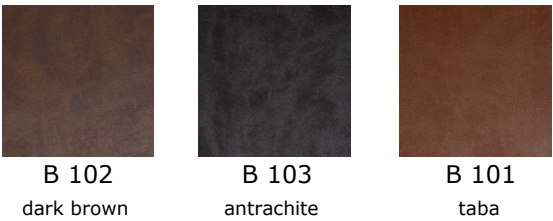
laquer



glass



bold artificial leather



seat color options

felt



W 101
orange



W 102
coral



W103
red



W 201
cream



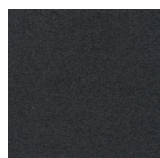
W 202
brown



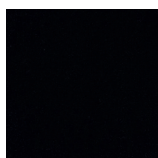
W 203
green



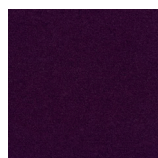
W 104
grey



W 105
antrachite



W 106
black



W 207
purple



W 205
dark blue

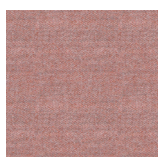


W 208
blue

synergy felt



LDS07
lilac



LDS74
coral



LDS73
light salmon



LDS48
olive



LDS46
lemon



LDS37
cocoa



LDS33
mink

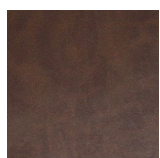


LDS83
light orange



LDS39
dark brown

bold artificial leather**



B 102
dark brown



B 103
antrachite

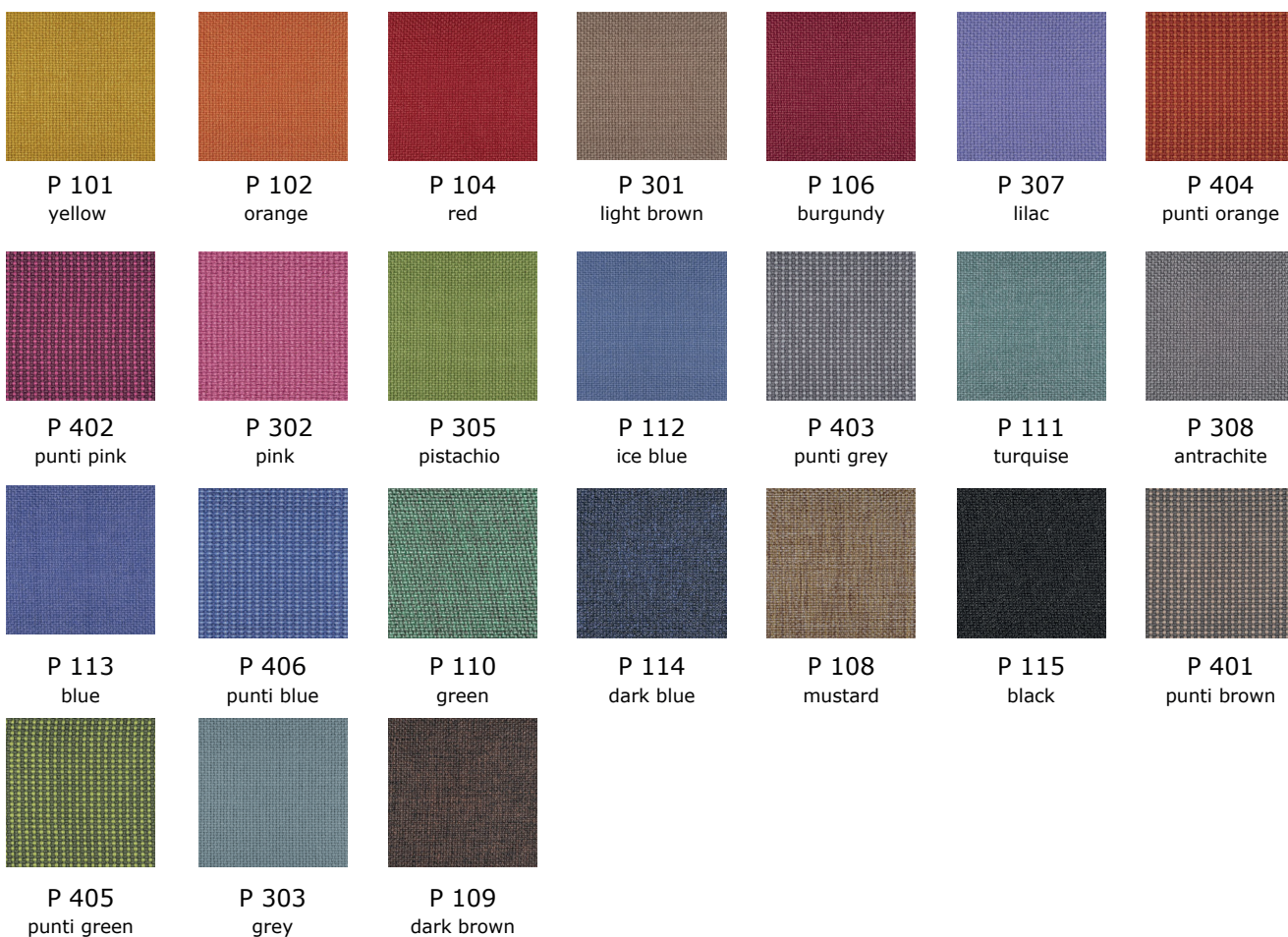


B 101
taba

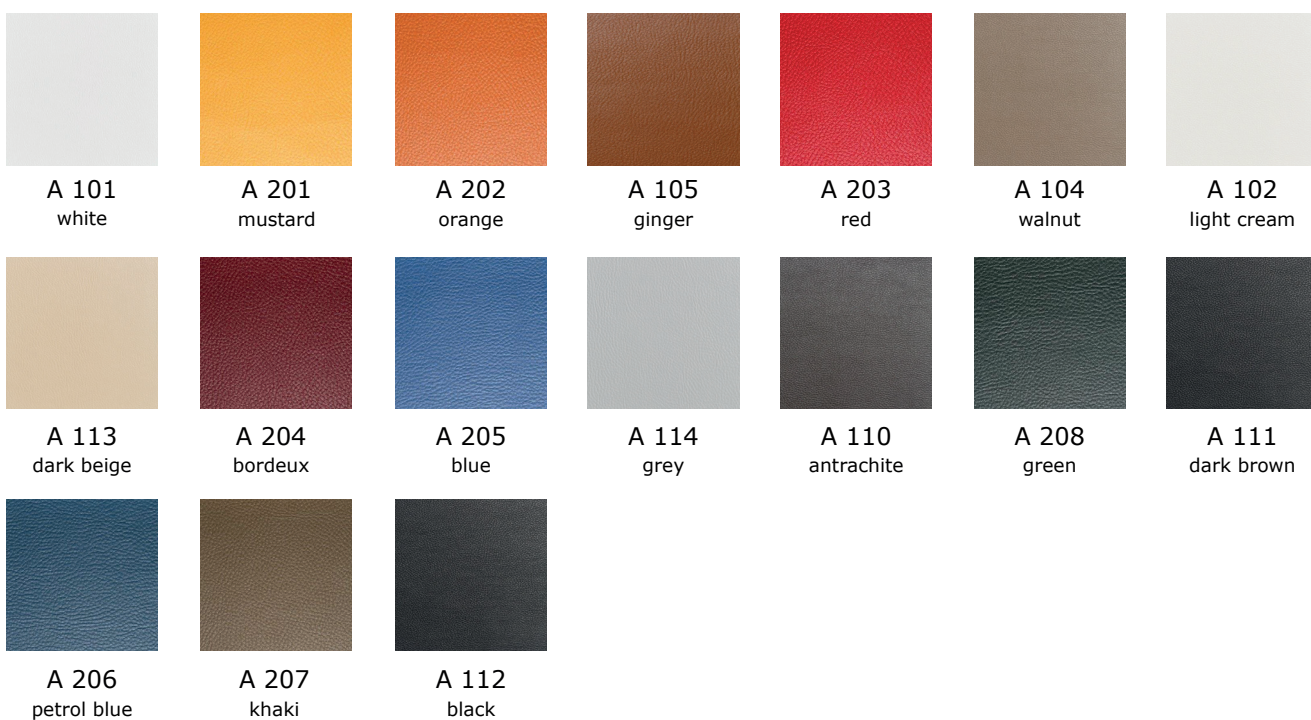
** Used in outer shell.

seat color options

panama



artificial leather



The color and texture on our website, printed and digital technical product documentation, may vary depending on the screen resolution settings and photo quality. True colors, you can visit our closest lady and see from our color cartel.

Designed to complement the new generation modern workspaces, Bliss product family brings in the comfort and style of a home to the workspaces with its coffee tables comprising of glass, leather and melamine structured on wood and metal foot alternatives, as well as the felt upholstery options.



Its half-circular form offers a wide sitting area to the user, while its soft and curvy inner surface maximizes comfort. Its corners plumped up from the back, and the leather shell structure that caresses the backrest and body from behind allow the user to become integrated into the sitting area, giving a sense of belonging.